

## HOW TO INSTALL LITEWIRE MORE QUICKLY

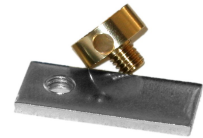
***\* use shorter cable links and splice them together with a coupler and 2 FSMA connectors***

Instead of 1 single link of 210m, you can make 3 links of 70m with 2 splices.



**ATTENTION:** each splice reduces the max. transmission length by 20m. E.g. if there are 2 splices on a link, the max. transmission length will be reduced by 40m, i.e. from 300 to 260m.

***\* use special drilled bolts (for ground mounted panels)***



***or drilled pins (for roof mounted panels)***



***and fix them into the mounting holes (see following pages)***

***\* use a cable reel to unspool the cable***

All LiteWIRE cables are in a spool and have a meter marking, so it's easier to check distances.

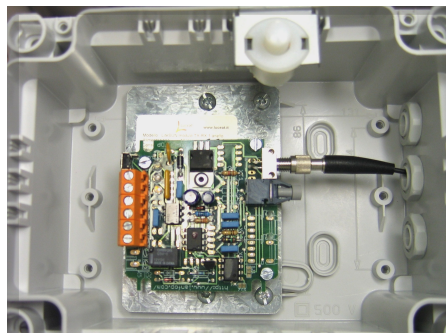
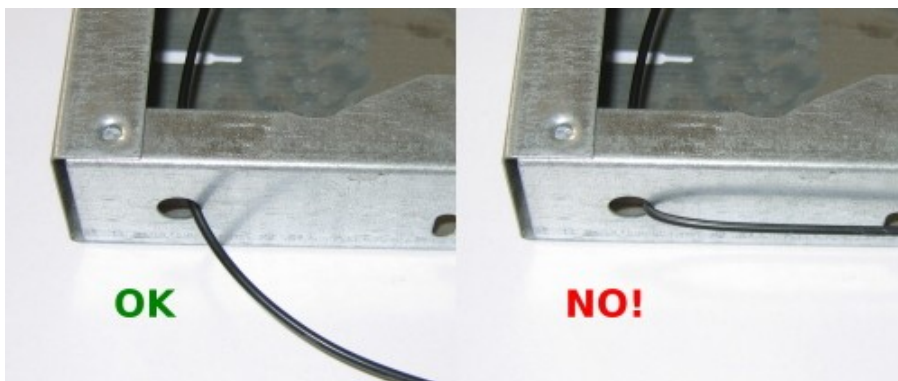


## HOW TO INSTALL LITEWIRE

### WHAT MUST NOT BE DONE

- \* do not walk on the fiber
- \* do not pull hard on the fiber
- \* do not use tight cable ties
- \* do not make angles or sharp bendings (min. bending radius: 25mm)

Plastic fiber is very resistant, but bends and angles may sensibly reduce the maximum link length of the system.

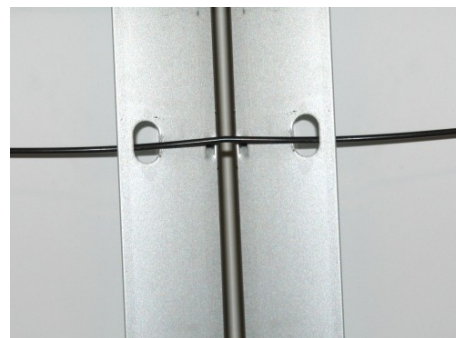


OK

NO!

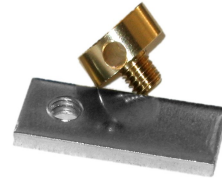
- \* don't insert the fiber into the mounting holes on the back of the panel, as it risks being damaged by sharp edges.

NO!



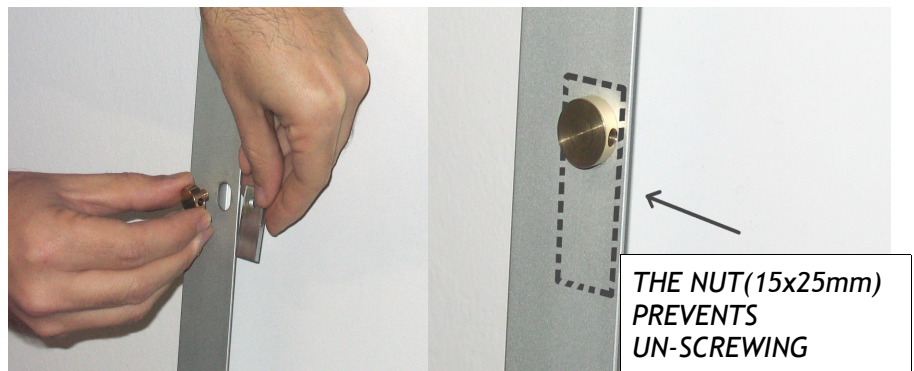
## DRILLED BOLT FOR GROUND MOUNTED PANELS

Drilled bolts make the installation easier and more secure.



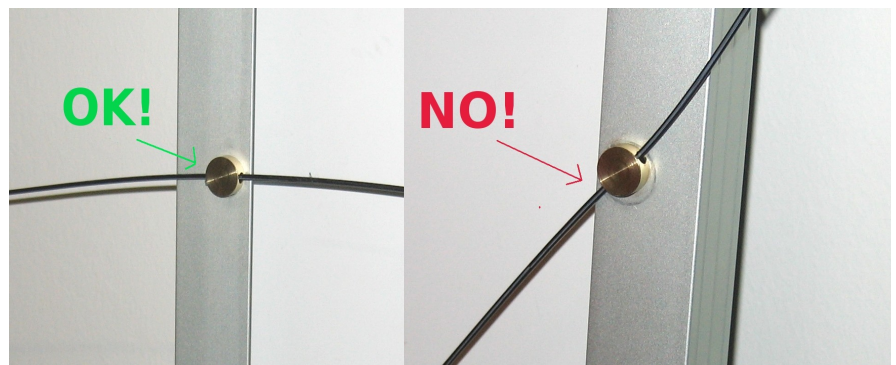
### 1. INSERT THE BOLT INTO THE MOUNTING HOLE AND SCREW IT.

*(Screw the bolt into the nut making sure that all the holes are aligned and parallel to the ground)*



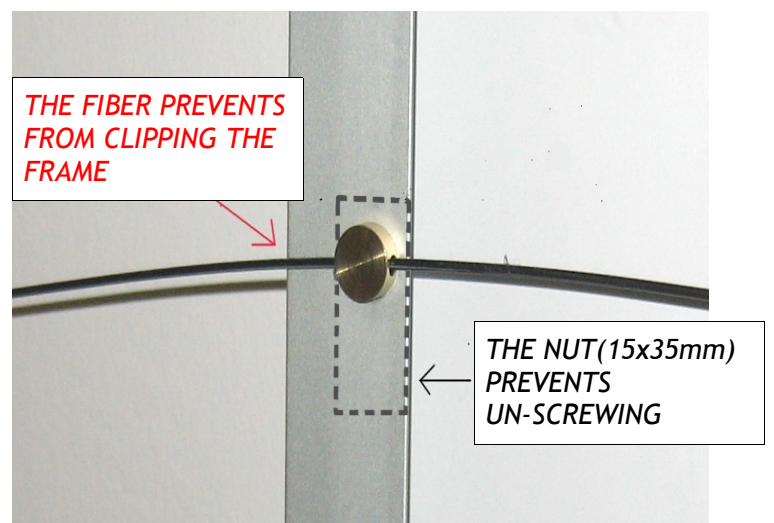
### 2. HOLES ARE ALIGNED

*(Insert the fiber into the hole so that it is parallel to the ground)*



### 3. THE NUT ON THE BACK PROTECTS THE MOUNTING HOLE.

*(As the holes are aligned, you can pull the cable from one side of the array to the other side: installation is quicker - e.g. 1MW: about 5 days with a 4-person team)*



## DRILLED PIN FOR ROOF MOUNTED PANELS

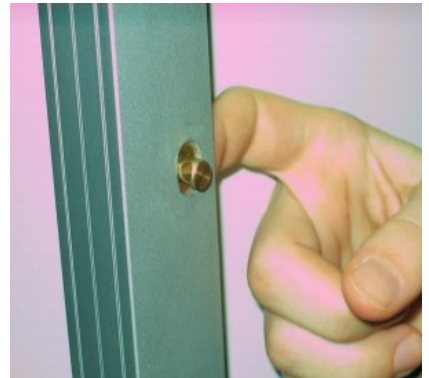
Drilled pins considerably reduce installation time for rooftop integrated installation



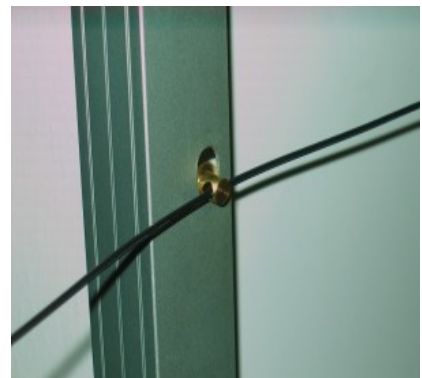
Use the drilled pin when you install the PV panels.



**1.INSERT THE PIN INTO THE MOUNTING HOLE AFTER FIXING THE PANEL TO THE STRUCTURE** (*you simply lay the pin into the hole - no need for fixing tools*)



**2.INSERT THE FIBER INTO THE PIN, UNROLLING IT FROM THE SPOOL.** (*The pin is not fixed, so it can freely move and fit to the fiber: the holes will always be aligned and the fiber flows smoothly and without frictions. Installation will be very quick, around 1 minute per panel*)



***The cable is fixed fast and secure to the panel and the pin makes the cable flow quickly through the panels and without bends, which could otherwise reduce the maximum link length of LiteSUN.***